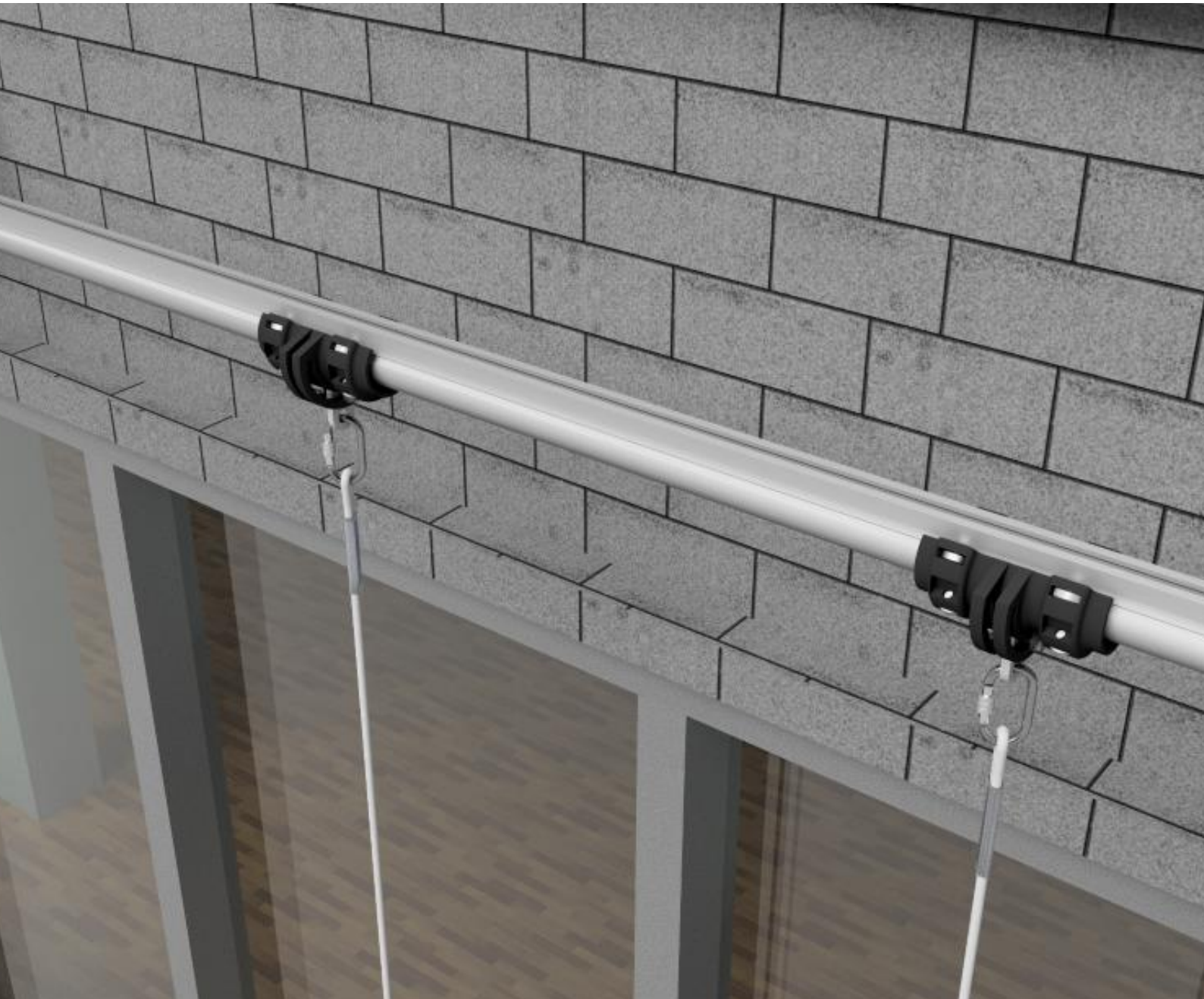


SEP

SAFETY ENGINEERING

— P R O D U C T S —



ProRail Abseil System

DATA SHEET

Copyright © 2018 Safety Engineering Products Limited. All Rights Reserved.

ProRail Abseiling and Fall-Arrest rail

ProRail is an aluminum extruded rail with a hard anodized coating used for abseiling rope access, fall-arrest and fall-restraint scenarios

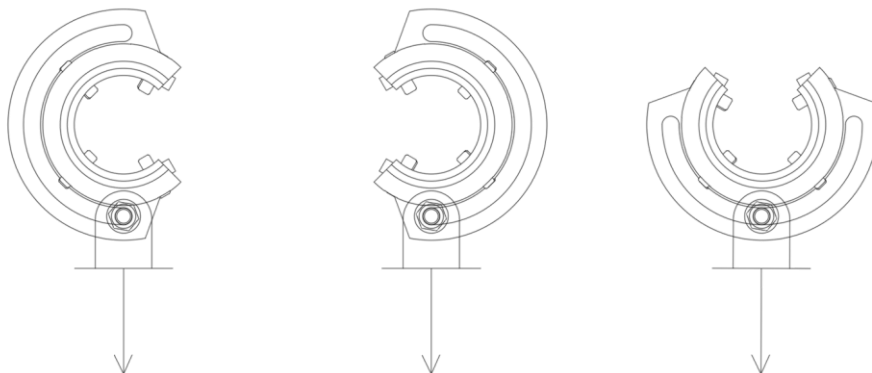
While in use, the user is connected to the rail via marine grade 316 stainless steel externally mounted traveling device

The traveling device is located onto the rail with 8 solid stainless steel rollers to provide a smooth travel in any orientation as well as excellent wear resistance

ProRail fully conforms to BS8610:2017 and by proxy conforms to EN795:2012

Fixings and positioning

The ProRail Can be fixed to structural concrete or steelwork via steel bracketry either directly, or, via cantilever arms
The ProRail requires a support bracket every 3m or less and can support a free-ended overhang of up-to 500mm
Thanks to the unique wrap-around design of the working lines can be placed in a 180° area around the rail



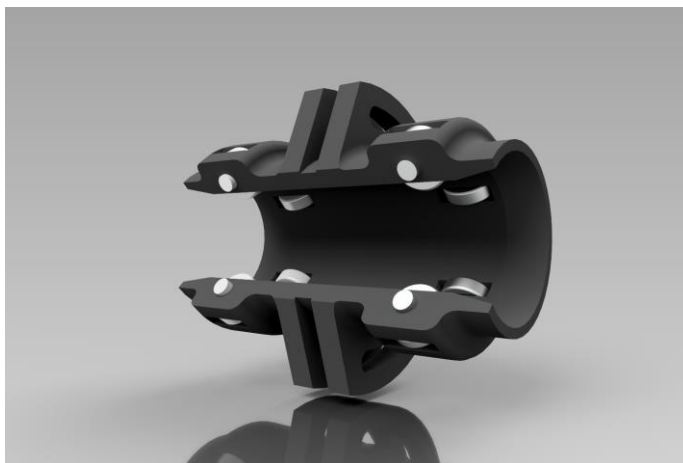
Mounting

The ProRail Rail features a mounting channel to accommodate a DIN 933 standard M16 bolt-head and DIN 125-1 form A washer to fix to the rail

This mounting channel runs the entire length on the rail to allow bracketry to fix to any point in the system

Movement

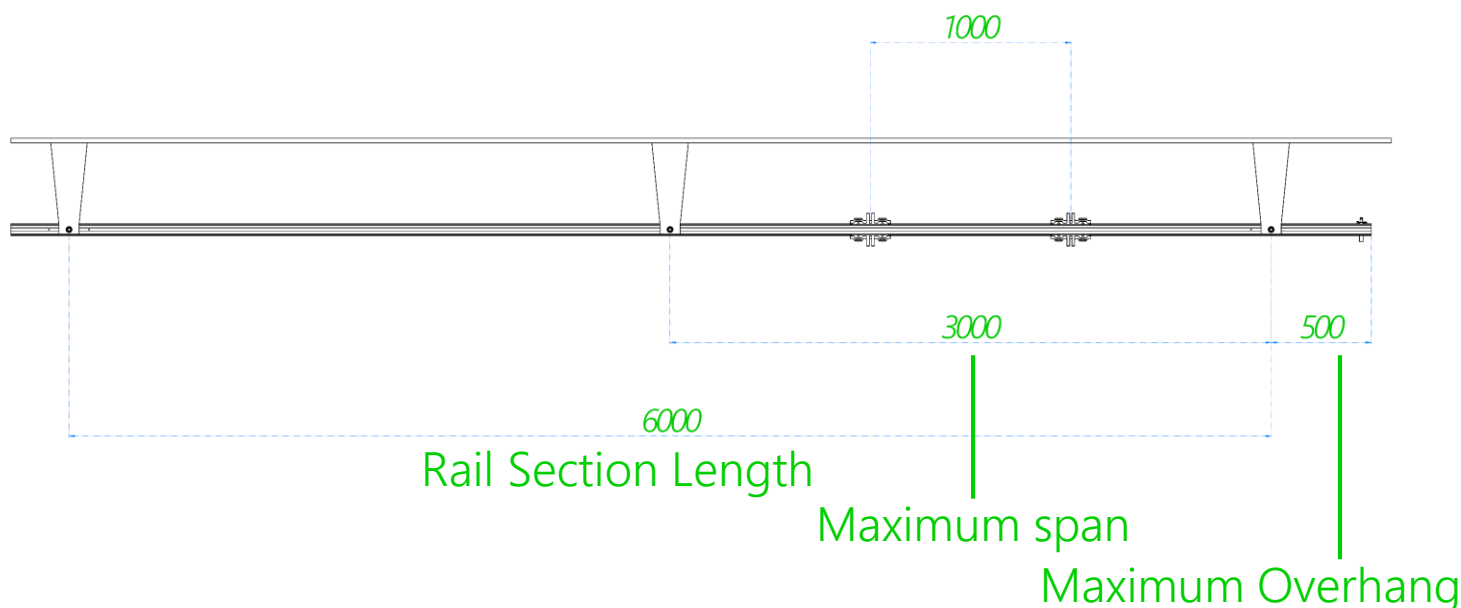
The ProRail traveller features 8 solid steel rollers to distribute the forces over multiple sintered bushings to allow the traveller to move freely even under working loads, this allows operatives to move along the building without needing to detach from the system.



Changing sections

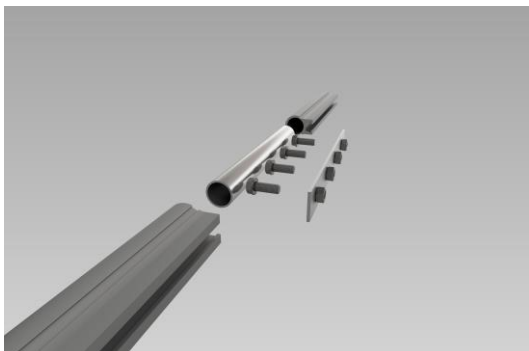
The ProRail SafeLoc gate system at the end of each section ensures that the operative's backup traveller is still held captive in the rail system while moving the main traveller to a new section. Optionally the rail system can be fitted with an attachment point to allow the operative to tether himself and the traveller he's moving to a fixed point to give an extra level of safety.

Optimal Working Separation

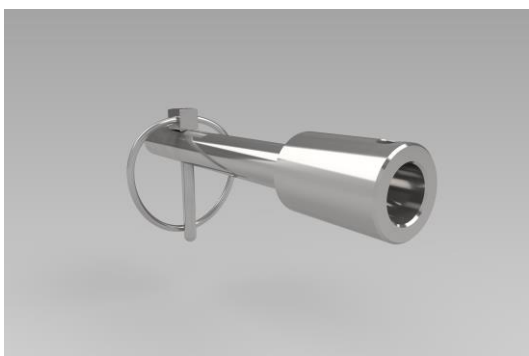
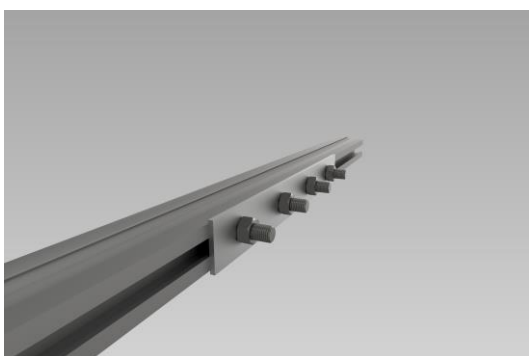


TECHNICAL DATA SHEET

ProRail Accessories



The ProRail System uses a two-part system for jointing the rail, an inner core to locate the pieces as well as provide the majority of the strength and a backing plate to keep the rail from twisting



The durable PinLock design ensures that even under the full emergency loading of 21kN on a full length overhang the trolley is still securely held on the rail



Needing only a 12.5mm or $\frac{1}{2}$ " hole to accommodate the pin the rail can easily be drilled in place with standard cordless drills allowing for complete flexibility when installing

TECHNICAL DATA SHEET

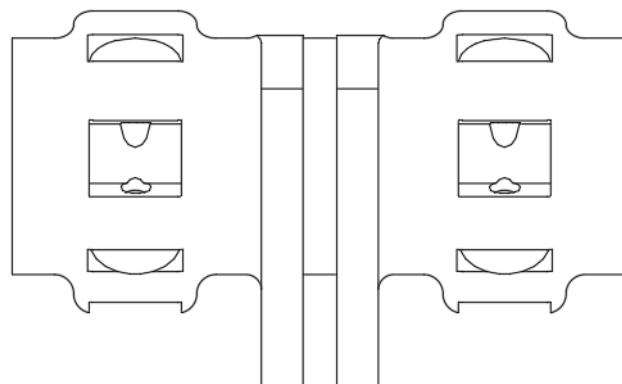
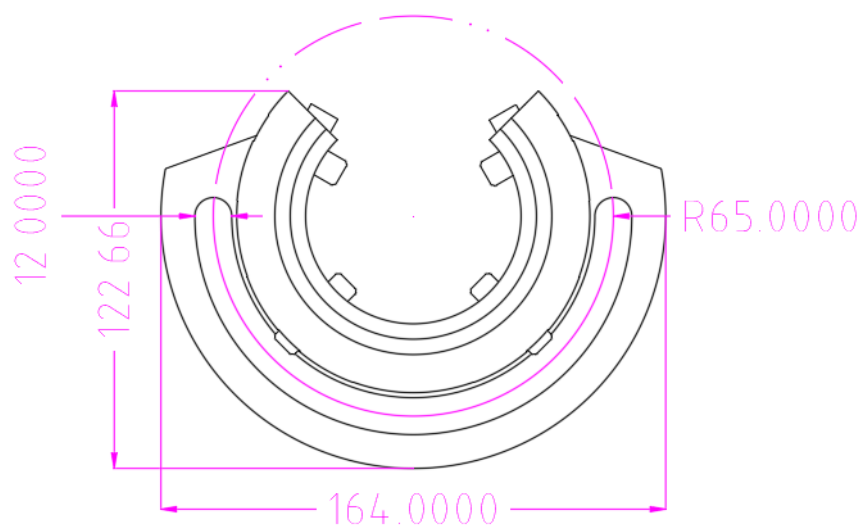
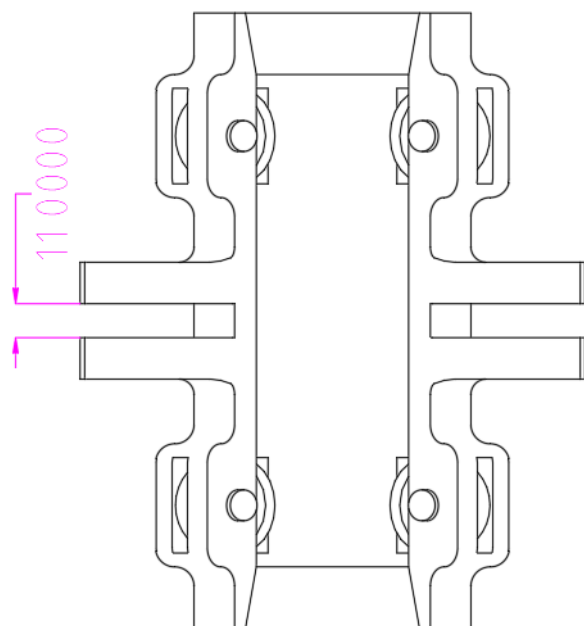
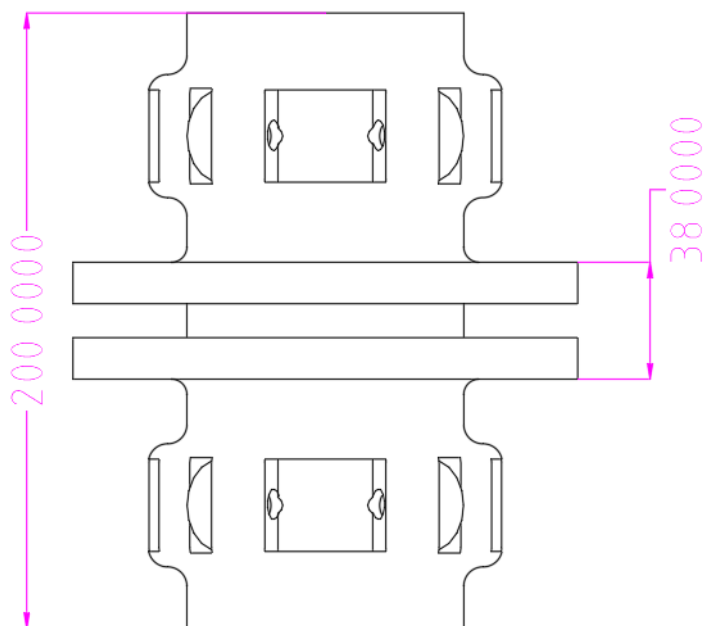
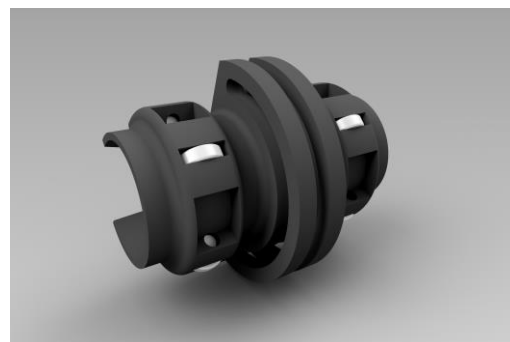
ProRail Traveler

ProRail Traveler

Material: Cast Marine Grade 316 s/s

Casting Certification: 100% X-ray certified

Material Certification: Chemical analysis for each batch



Optional Extras

Dogbone anchor

The dogbone anchor is a single piece backup device designed to give the operative a safe anchor point to use while he moves his primary traveller from one section to another. The dogbone can also be used as a tether to support the primary traveller to fasten to while it isn't supported by the rail to reduce the stresses on the operative's harness in the event that the traveller is dropped



WARRANTY

LIMITED WARRANTY AND LIMITATION OF LIABILITY

Each component of the ProRail System is warranted to be free from defects in material and workmanship under normal use and service. The warranty period is one year and begins on the date of shipment.

This warranty extends only to the original buyer or end-user customer of a ProRail System authorized Installer and does not apply to any product which, in Safety Engineering Products opinion, has been misused, altered, neglected, contaminated, or damaged by accident or abnormal conditions of operation or handling.

ProRail System authorized resellers shall extend this warranty on new and unused products to end-user customers only but have no authority to extend a greater or different warranty on behalf of Safety Engineering Products. Warranty support is available only if a product is purchased through a ProRail System authorized installer or Buyer has paid the applicable international price. Safety Engineering Products reserves the right to invoice Buyer for importation costs of repair/replacement parts when product purchased in one country is submitted for repair in another country.

Safety Engineering Products warranty obligation is limited, at Safety Engineering Products option, to refund of the purchase price, free of charge repair, Or replacement of a defective product which is returned to a ProRail System authorized installer within the Warranty period.

To obtain warranty service, contact you're ProRail System authorized installer to obtain return authorization information or an inspection on the system.

Safety Engineering Products assumes no risk for damage in transit.

Following warranty repair, the product will be returned to Buyer or ProRail System authorized installer, transportation prepaid (FOB Destination).

If Safety Engineering Products determines that failure was caused by neglect, misuse, contamination, alteration, accident, or abnormal condition of operation or handling, by use outside the product's specified rating, or normal wear and tear of mechanical components, Safety Engineering Products will provide an estimate of repair costs and obtain authorization before commencing the work.

Following repair, the product will be returned to the Buyer or ProRail System authorized installer, transportation prepaid and the Buyer or ProRail System authorized installer will be billed for the repair and return transportation charges (FOB Shipping Point).

This warranty does not prejudice your statutory rights.



Safety Engineering Products Limited

☎ 01142 611112

📍 Unit 9, Parkway Link Estate, Sheffield, S9 3AJ

✉ info@vws-ltd.co.uk